

Sacred Trinity, Salford



Stakeholder Engagement Summary
December 2021



Version history

Project name: Sacred Trinity, Salford

Project number: 8913

Client: The Parochial Church Council of Sacred Trinity, Salford

Rev:	Date:	Status	Name	Description
1	18-11-21	DRAFT	Lee Bowen Architectural Assistant	DRAFT
2	14-02-22	FINAL	Edward Kepczyk Associate	Final Issue

This document has been prepared for the titled project or named part thereof and should not be relied upon or used for any other project without an independent check being carried out as to its suitability and prior written authority of Buttress being obtained. Buttress accepts no responsibility or liability for the consequences of this document being used for a purpose other than the purposes for which it was commissioned. Any person using or relying on the document for such other purpose agrees and will by such use or reliance be taken to confirm his agreement to indemnify Buttress for all loss or damage resulting therefore. Buttress accepts no responsibility or liability for this document to any party other than the person by whom it was commissioned.

Supported by:



Buttress

Buttress Architects Ltd.
41 Bengal St.
Manchester
M4 6AF

T: 0161 236 3303
W: www.buttress.net

1.0 Introduction

1.0 Introduction

Buttress was appointed by the Parochial Church Council of Sacred Trinity, Salford to develop and deliver proposals to engage with local stakeholders to better understand their aspirations and relationship with the church. The objective of this process was to define a series of principles that informed the development of a sustainable vision and brief for the future of Sacred Trinity.

Sacred Trinity Church is a Grade II* listed building located on Chapel Street in Salford, close to the River Irwell which forms a boundary with Manchester. Blackfriars Street runs to the north east and crosses the nearby river. Bury Street connects to Chapel Street to the south west, and to the north of the church is a hard landscaped pedestrian area with the railway line above.

The church does not sit within a typical churchyard and is instead very much part of the streetscape. There is an area of green space to the east, which is used as amenity space in this part of the city.

Sacred Trinity forms the centre of the Flat Iron Conservation Area, deriving its name from the triangular-shaped plot of land which contained both Trinity Church and Trinity Market. The plot of land resembles the shape of a flat, hot coal heated iron, once used for ironing clothes.

Salford is undergoing substantial investment over the next 20 years, targeted at employment, new homes and improved infrastructure. Salford City Council has identified four strategic growth locations; Salford City Centre, The Quays and Media City UK, Greater Manchester Western Gateway and Salford's towns. The local economy is expected to grow by over 46% during this time period. As a response to this, the Parochial Church Council wish to explore how Sacred Trinity will respond to the liturgical and non-liturgical role of the church in Salford.

The engagement process focussed on a series of virtual and physical interactive workshops. The objectives of these were to;

- Understand the existing constraints of Sacred Trinity and the impact of these
- Inform a design brief that looks at reordering the church
- To engage with the local community and stakeholders to understand what the local community wants and needs from Sacred Trinity
- To understand the purpose of the church for the community
- The design brief will look at making the church fit for purpose and enhance opportunities to generate revenue
- Creating a sustainable place for liturgical and non-liturgical use

This document outlines and summarises the development and delivery of this process.

2.0 Consultations

2.0 Consultations

2.1 Overview

2.1.1 Buttress created a strategy for engagement between the local community and the key stakeholders for Sacred Trinity. The engagement consultations that took place enabled the participants to provide their thoughts, views and concerns as feedback to help support the development of a spatial vision.

2.2 Aims and Objectives

2.2.1 The aims and objectives of the public consultations were to;

- Understand the existing constraints of Sacred Trinity and the impact of these
- Inform a design brief which looks at reordering the church
- To engage with the local community and stakeholders to understand what the local community wants and needs from Sacred Trinity
- To understand the purpose of the church for the community
- The design brief will look at making the church fit for purpose and enhance opportunities to generate revenue
- Creating a sustainable place for liturgical and non-liturgical use

2.3 Approach

2.3.1 The table below outlines the types of groups that Buttress sought to engage with along with the method of engagement. The consultations took place using both online communication methods and face to face engagement to gather initial thoughts and aspirations for the church.

	Type	Where	How
Church community and key stakeholders	1 – 2 – 1, interactive workshop	Online and site.	Interactive workshop, post-it notes exercises and information gathering 1-2-hour session and interview style meeting/questionnaire.
Existing community groups who use the church	1-2-1, Online	Online	Interactive workshop, post-it notes exercises and information gathering 1-2-hour session and interview style meeting/questionnaire.
Local residents and wider community	Drop-in interactive workshops, Online	Online and site.	Approach residents on the street and invite them into space to engage and interact with post-it exercises as well as interview style questions Online video, email address for comments.

2.4 Activities

2.4.1 Activity 1

2.4.1.1 Participants were presented with drawings of the site. They were asked to highlight, using stickers, what they believed works well and enhances the offer and to identify what does not. This feedback was later used to help inform group discussion.

2.4.2 Activity 2

2.4.2.1 Participants were also asked to use Post-it notes to explore in further detail their positive and negative thoughts on the following;

- Physical building
- The offer and use
- Aspirations
- Other

2.4.3 Activity 3

2.4.3.1 The third activity required participants to give their opinion on what they thought was fundamental to the future of the church based on the existing facilities and what possible proposals could improve the use of the church.

2.4.4 Activity 4




2.4.4.1 Activity four asked the respondents to place stickers on a series of images that they felt best reflected the culture, ethos and vision for Sacred Trinity.

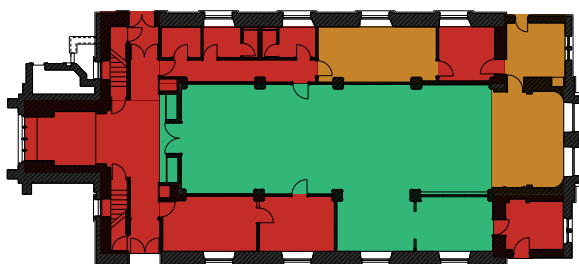
2.5 Outcomes

2.5.1 Activity 1

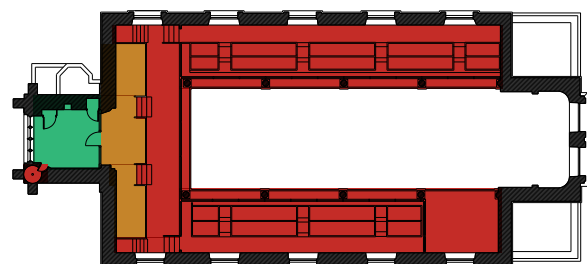
2.5.1.1 Gathering all of the feedback from Activity 1 helped reveal how well people thought the spaces in the church were used. The drawings below help identify these areas.

Key

	Most practically, well used areas
	Areas that could be improved
	Least successfully used areas



Existing Ground Floor Plan



Existing First Floor Plan

2.5.2 Activity 2 Outcomes

2.5.2.1 As part of this exercise we gathered feedback from those who participated. The points made were in response to the following questions;

- How could the church be better used by new users?
- How could the church be better used by the local community?
- How could the church be better used by the existing congregation?
- How could the church be better used by existing external users?
- How do you see the future of the church?
- What are the key improvements that could help the church achieve the future you have outlined?

- Library a great idea
- More space for worship, engagement, office to let out etc..
- Forum for isolated groups
- Digital space

- Incorporating local history and awareness
- Tourists, heritage and arts
- Event space
- Open days
- Information point

- Food club/bank
- Welfare rights and debt service
- A safe space for those who need it
- Social group space for more diverse groups

- Art exhibitions and workshops
- Community cafe
- Local community events
- Connecting with other local venues/organisations

- As a place to contemplate
- Workshops and classes
- Performance and exhibition
- Services & celebrations

- Parking a must
- Free wifi
- Accessibility
- Hot desking
- Free space for business
- Event space
- Music, dance, film

- Inviting schools
- Future to be open to all people
- Religious aspects, history of building, local area, art, workshops, architecture, PSHE

- Breakfast club
- Safe space for all
- Links to external support groups
- Bar / cafe
- Subsidised venue hire

- Easy height seating
- Meeting rooms
- Booking for events
- Quiet hour
- More flexible spaces
- More fundraising
- More diversity

- Regular social events curated by leaders in music
- Important art space
- Important community space
- Thriving worship space

- Usable area upstairs
- Expansion of office space
- Enhanced acoustics
- Accessibility
- Widening of pews
- Improved WC's
- Flexible space

- Goal to be net-zero by 2030
- Modernisation of the church
- Better use of space
- Affordable production offerings
- Bookable space

2.5.3 Activity 3

- The main space is key but the front/balcony is useful too
- The ground area is void at the end of parades?
- Worship space is key – but needs flexibility – small / large events
- The entrance isn't really fit for purpose at the moment – awkward, cramped, inviting – not first great impression for new people
- Entrance a welcoming, showing, practical space
- Nave is a hub of activity
- Worship community space in same service area
- Preserving historic elements that help Sacred Trinity stand out
- Quiet room feels a bit unfriendly at the moment
- Worship, weddings, funerals, baptism, community
- Meeting area is good but could be redesigned to be less awkward
- Flexible space used for events
- Keep quiet room but make it use/access a bit clearer – seems just like a side room at the moment
- Big open flexible main space for worship and events
- Keep the quiet room – ideal for people with autism or those overwhelmed/ anxious.

- Improved and more usable kitchen facilities (catering kitchen)
- Accessible throughout – lifts, signage, sight, sound considering all disabilities.
- Modernised facilities introducing technology, wifi , computer access
- Stand alone community space
- Bar/café
- Office space
- Worship area – this is well positioned in the building
- Well organised upstairs artefacts and availability of learning space
- Side spaces to be better used, good allocation of space appropriate for purpose.
- Upstairs more usable
- More 1-2-1 spaces
- A real emphasis on being a community space
- Better utilisation of spaces available upstairs
- Wider doors for wheelchair access
- This will welcome more of the disabled community
- Community involvement almost irrespective of what or who
- Access to space

- Lift to first floor
- Community engagement and local educational partnership working
- Use of outside space café etc.
- Subsidised drinks like in other cafés full inclusive including local school for after school clubs
- Space for networks (community creative church) to come together, to work together
- Workshop space for school visits
- Access to the first floor (plus better storage to free up that space)
- Booklet of 'interest' items/areas e.g.. What the plaques, hangings, windows & crests represent to give to visitors/educators pre-visit
- A bar/café area
- Group spaces with shared resources
- Community engagement and partnership working
- Event space
- Info for people new to church – why do Christians 'do' church.
- How can non-Christians enjoy the space?
- Altar could be more grand
- Office space that may be used for hot desking and decent wifi

3.0 Vision Workshop

3.0 Vision Workshop

3.1 Introduction

3.1.1 The vision workshop for Sacred Trinity was held in July 2021 with the project team and was set up to be used by the church and the wider congregation to establish project outcomes and vision.

3.2 Aims and Objectives

3.2.1 The aims and objectives of the vision workshop were to;

- Work with the project group to understand and establish a vision for the project
- To create a vision that can be used to aid decision making for the church when considering any capital works
- To generate a list of objectives for the project that align with the project vision

3.3 Approach

3.3.1 The workshop was split into a number of smaller activities. The workshop was heavily focused on allowing people to answer *why* they want to make a change, *what* is the reason, *what* is the impact and *how* can we achieve this? The purpose of these exercises was to establish a number of phases and statements that link back to personal experiences of the congregation and project board.

3.3.2 Together we would use the stories, statements and words discussed as a basis to form the vision and identify project objectives.

3.3.3 The workshops were carried out in the format and sequence as outlined below;

- 2 Workshops separated one week apart
- Week 1 - Groups were encouraged to write down their first thoughts on why we were undertaking this work
- Week 2 - Re-grouping to discuss issues raised along with refinement of initial ideas

3.4 Activity 1 - Why do you think we are doing this piece of work?



3.5 Activity 2 - Forming the purpose and vision

1

Story - Sunday morning service

- Open table
- Felt welcome when first walked through the door
- Felt welcome so continued to visit
- Taza service
- Adaptable
- Felt it was something I wanted to be part of

2

Story - Beer & carols

- Whole community event
- Its packed and busy
- Cosy and fun
- Space become invaluable to the community
- Inclusive event
- Aside from the pub there are not many spaces you can come together and be social
- Feel connection
- Not service
- Good mix of people in a social and relaxed environment
- Builds community

3

Story - Socialising after service

- The doors used to be locked during service
- People would leave straight after service
- One day people were gathered around and talking to each other after service
- Had a feeling people were looking out for each other
- Felt a natural moment and progression
- Felt acceptances and welcome in that moment
- Boars head symbol of hospitality (is this the connection to history?)

4

Story - Engagement through the pandemic

- Engaged with the community on how to re open
- Managed to have services during the pandemic
- Listening and not compromising
- Continue to be different, a little island surrounded by a changing city
- Congregation are local and from far away
- Managed to make it a place for everyone

5

Verbs

- Welcome
- Connect
- Include
- Elevate
- Transform
- Inspire
- Support
- Encountering
- Beautiful
- History
- God
- Art
- Heritage
- To hear
- To listen
- To please
- To engage
- To pleasure
- To celebrate
- To feed
- To serve
- To comfort
- To bring joy

3.6 Activity 3 - Human Impact

1

Story - Sunday morning service

- Satisfaction after service
- Felt content, peace, happiness, pleasure and patience
- Church understand the needs of the LGBTQ+ community

2

Story - Beer & carols

- Acceptance
- Joy
- Safe space
- Relaxed
- Fun

3

Story - Socialising after service

- Progression
- Peace

4

Story - Engagement through the pandemic

- Listening to community
- Felt safe to access
- A place where the vulnerable and disadvantaged can get help

5

Verbs

- Welcome
- Connect
- Include
- Elevate
- Transform
- Inspire
- Support
- Encountering
- Beautiful
- Content
- Peace
- Happiness
- Pleasure
- Patience
- Safe
- Acceptance
- Joy
- Fun
- Relaxed
- Come as you are
- Valued
- Inclusive

6

Other

- Digital infrastructure
- Who isn't using the space?
- Who is being excluded?
- Church to respond to future communities
- If you took the congregation away what you be left with?
- More potential as evenings are busy and days are slow
- Church events can be difficult to arrange due to other commitments
- I what we have now ideal?
- Represent needs of communities such as LGBTQ+
- Cater to homeless charities but not be overcome by it
- USP - Ancient space but people are progressive

3.7 Workshop 2 - Human Impact

3.7.1 Once the first session was completed, a weeks break was given so that our participants had some time to think, digest and explore the ideas that were initially discussed. In the second workshop we used post-its to list out all the key words and project objectives previously discussed. We then discussed each element identifying what should sit under the vision and what should be included within the project visions. In doing this, a short list of objectives has been generated and a number of project visions drafted.

3.7.2 The next step is for the church to review the project objectives and project visions to agree the final project brief.



4.0 High Level Initial Option

4.0 Initial Option

4.1 Opportunities

4.1.1 Arrival sequence

- Spacious entrance
- Accessible entrance

4.1.2 Redundant space

- Opportunity to utilise space at gallery level
- Large windows provide good natural light
- West & East spaces at ground level not original construction and have potential to be modified

4.1.3 Nave & circulation areas

- Hallway widths could be opened up
- Ability to host wide range of events
- Pews are not fixed allowing for greater flexibility
- Objects and wall artefacts are not fixed allowing for greater flexibility

4.2 Constraints

4.2.1 Arrival sequence

- Entrance and foyer could be improved aesthetically
- Inappropriate lighting creates dimly lit space
- Seating area in entrance hall is not used well

4.2.2 Redundant space

- Fixed pews at first floor provide little flexibility
- Floor level differences at first floor constrain potential use
- Adequate storage provisions needed to de-clutter first floor

4.2.3 Facilities

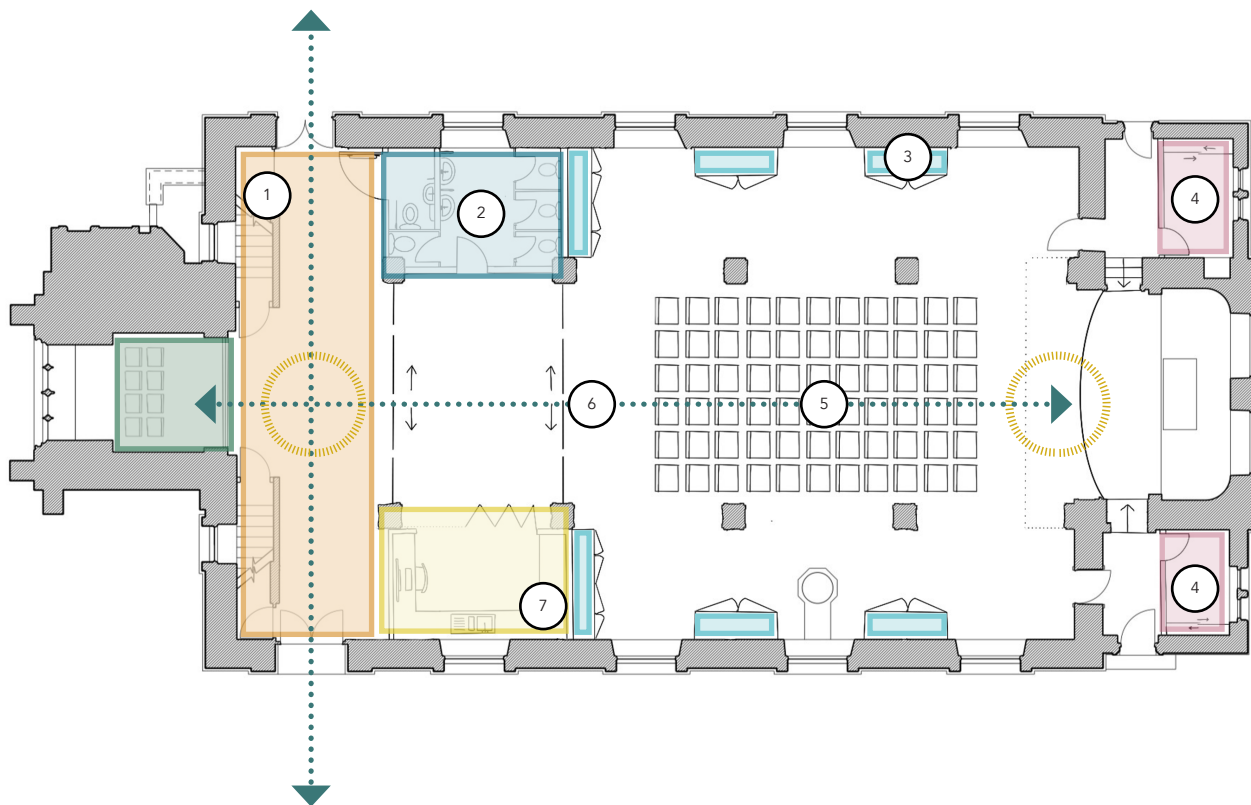
- Updated WC facilities could be provided
- Improved kitchenette facilities needed to cater for groups

4.2.4 Circulation

- Hallways at ground floor are encroaching and could be reconfigured

4.3 Initial design principles

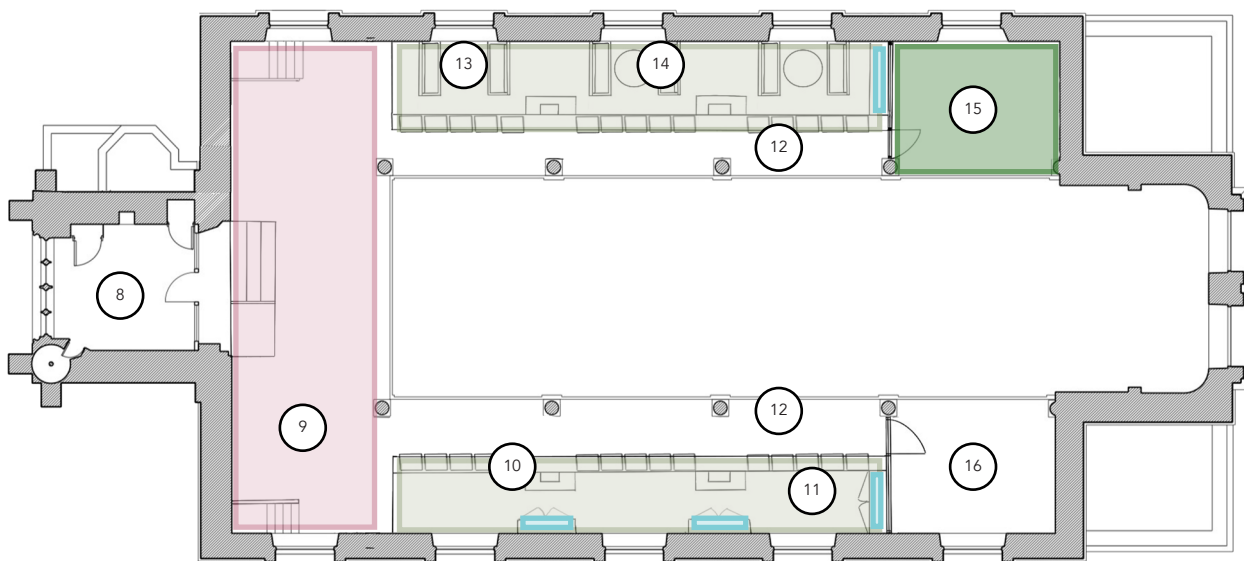
Ground Floor Plan



Key

	Quiet room in West tower		Flexible meeting spaces
	Kitchen facilities		Open space for meetings and performances
	Welcome/Orientation/Reception area		Parish office
	Upgraded WC's		Storage

First Floor Plan



1. New welcoming arrival sequence
2. Upgraded facilities
3. Additional storage provision for events groups and performances
4. Vestry & meeting room
5. Reordered Nave provides flexible worship/activity space
6. Moveable screen
7. Upgraded amenities to cater for groups and events
8. Ringing chamber
9. Redundant space made into open flexible space
10. Flexible furniture
11. Creating multi-functional space
12. Open meeting space/seating area
13. Space for informal meetings
14. Re-activating the gallery space
15. Updated office accommodation
16. Organ

Buttress

Architects | Masterplanners | Heritage Consultants